



Jalousie 25 mm

Venetian Blinds 16/25 mm / Stores vénitiens 16/25 mm

Typ 8800

Achtung: Jalousie muss waagrecht montiert werden.
 Attention: Venetian blind fitting has to be carried out in a leveled and horizontal position.
 Attention: Le store vénétien doit être monté à l'horizontal (à niveau).



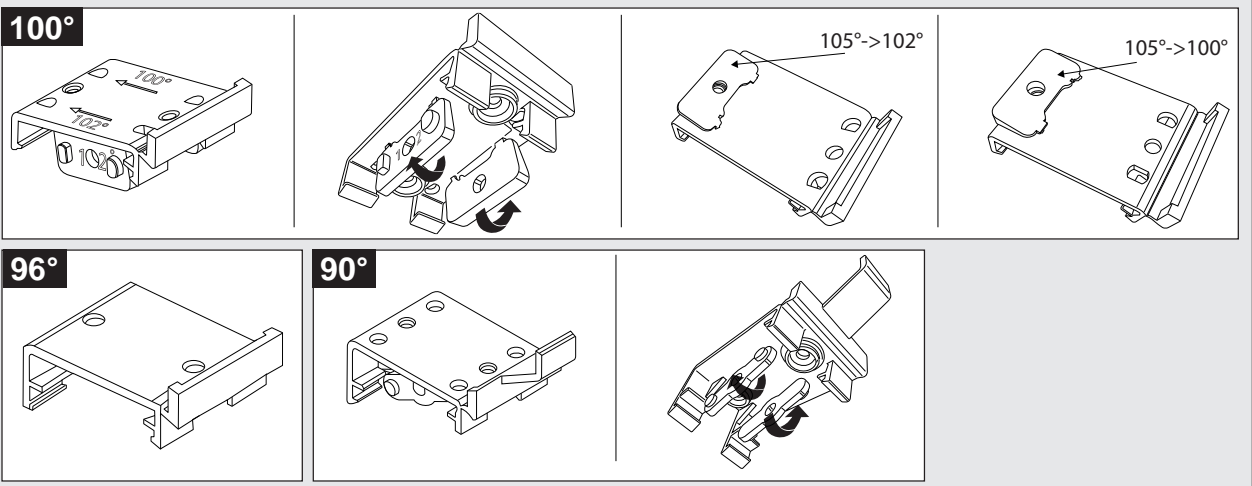
Wichtig!
Bitte aufbewahren.

Important!
Please retain.

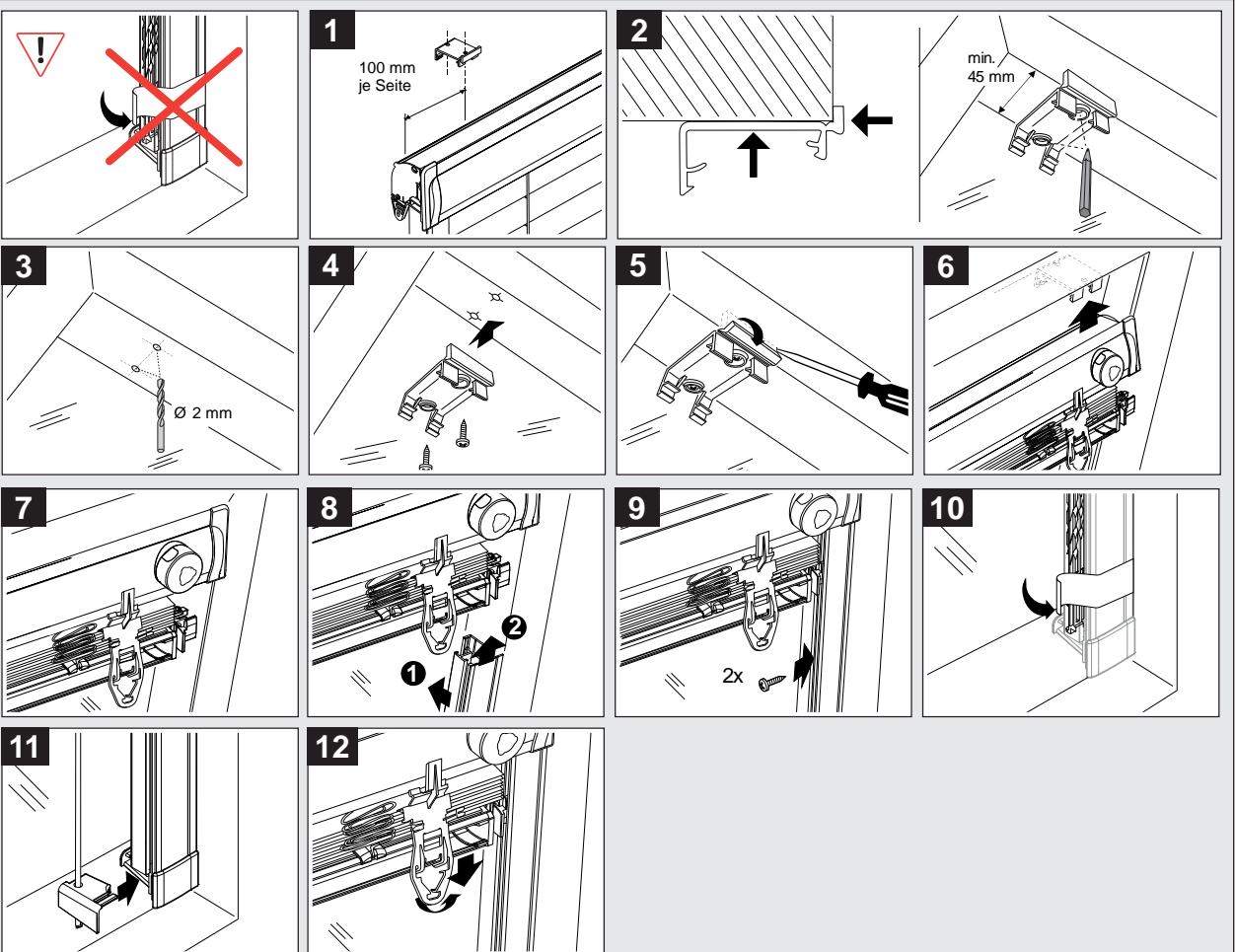
Important!
Veuillez conserver.

Montage • Fitting • Montage

Vorbereitung preparation préparation



Clip-Montage clip montage montage de clip





Jalousie 25 mm

Venetian Blinds 16/25 mm / Stores vénitiens 16/25 mm

Typ 8800



Achtung: Jalousie muss waagrecht montiert werden.
Attention: Venetian blind fitting has to be carried out in a leveled and horizontal position.
Attention: Le store vénétien doit être monté à l'horizontal (à niveau).

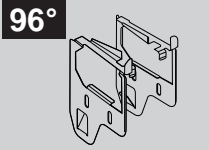
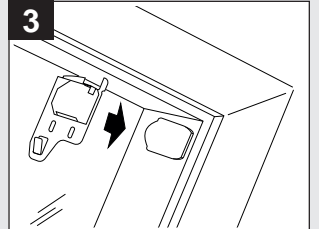
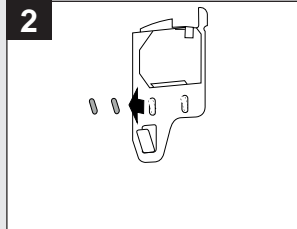
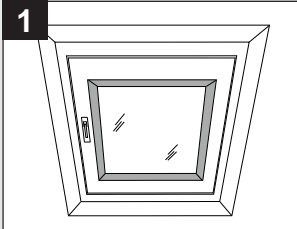
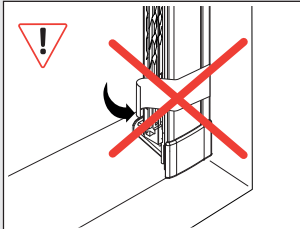
Wichtig!
Bitte aufbewahren.

Important!
Please retain.

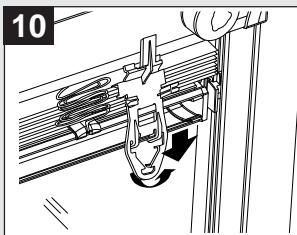
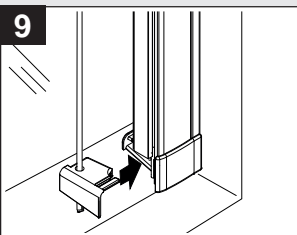
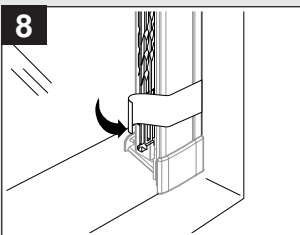
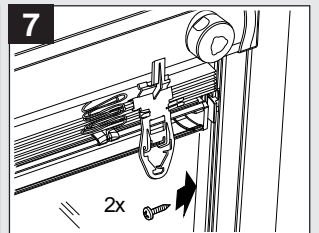
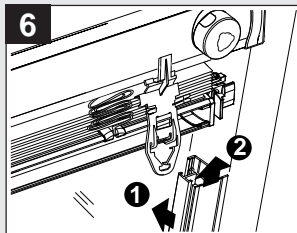
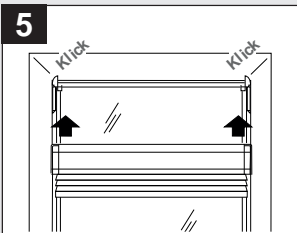
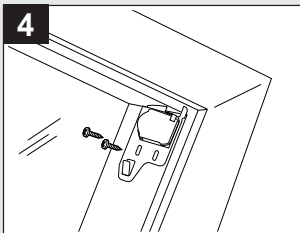
Important!
Veuillez conserver.

Montage • Fitting • Montage

Seitenträger
side bracket
support latéral



Pick`n Click
für/for/pour
VELUX®



Demontage • Disassembly • Démontage

